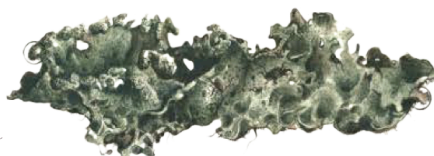
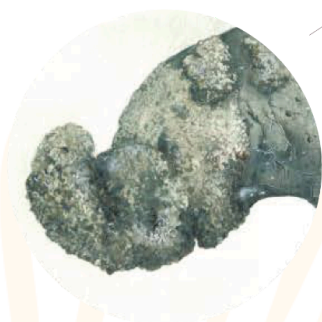


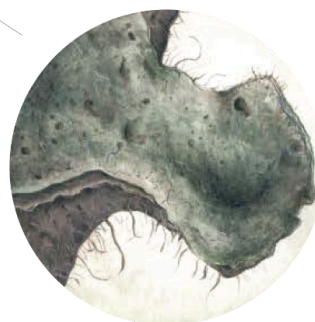
Why Liquen?



Vista General Liquen | 1x



Soredio | Estructura Granancular 20x



Talo | Cuerpo Liquen 20x

Lichens are peculiar living beings as they are not individual organisms but are formed by the association (symbiosis) of fungi and green algae (or a photosynthetic organism).

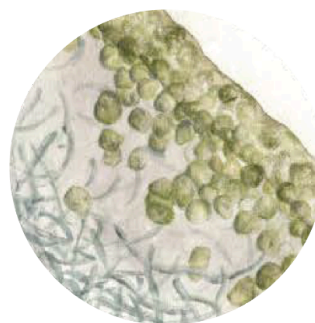
Thanks to their photosynthetic ability, they provide the necessary nutrients with mutual benefit. Both organisms live in a close mutualistic symbiotic relationship.

Kura Biotech, through the Liquen Foundation, strengthens its commitment to "give back," seeking to create this successful lichen-like symbiosis between Kura and society to achieve a positive impact on it.

We don't do charity. We give back.



Algas verdes e hifas hongos en Soredio | 2000x



Disposición algas verdes e hifas hongos en Talo | 2000x

Liquen Foundation

Through Liquen, Kurians collaborate on projects that inspire them. Each member of our team has the opportunity to support causes they are passionate about and volunteer as Ambassadors for specific projects.

To determine which projects will receive requested resources, we hold two voting sessions (usually in March and September) where all Kurians gather to hear each proposal. During these sessions, we assess the scope, expected impact, and measurement criteria of each project.

We aim to contribute to high-impact projects across two dimensions with specific metrics:

1. ENVIRONMENT:

- **Carbon Footprint** (tons of CO₂ equivalent)
- **Area of Conserved and/or Restoration Ecosystems** (m²)

**We define 'Conservation' as the act of protecting and preserving natural areas, ecosystems, and biodiversity in their original state without significant intervention.*

'Ecosystem in Restoration' refers to a biological system composed of a community of living organisms and their natural environment, undergoing recovery to regain its natural functionality after degradation. This involves the gradual restoration of biodiversity, ecological processes, and species interactions with their environment.

Our approach addresses various components such as flora, fauna, soils, and bodies of water through a holistic and scientific approach, particularly in extensive areas like forests or wetlands, aiming to restore ecological balance and promote environmental sustainability.

2. COMMUNITY:

- **Number of vulnerable children supported by the program** (under 16 years through intervention programs)
- **Number of vulnerable individuals supported by the intervention program**

**Vulnerable individuals are those at a disadvantage due to inherent characteristics or life circumstances. These disadvantages may result from factors such as age, health, gender, disability, sexual orientation, ethnic origin, education, social environment, economic situation, among others. They are more likely to experience social exclusion, physical/emotional harm, and have limited access to essential resources and opportunities for full development and quality of life.*

Who can apply?

We aim to enhance the personal and professional growth of our team at Kura Biotech. Therefore, **each Kurian** can nominate a project as Ambassadors for an initiative, which may be executed by an external institution (e.g., foundations, community boards, or organizations formed exclusively for this purpose).

Requirements for participation:

- At least two Ambassadors from Kura must be involved, serving as formal representatives responsible for project execution and oversight before the Foundation.
- The project must be measurable, with its own metrics and at least one metric related to our Community or Environment dimensions.
- It must be local (geographically executed where Kura Biotech has an impact, namely where its team members live: Puerto Varas and surroundings, Santiago, and the USA).
- The maximum project duration is one year; longer projects should be divided into stages, and each stage can be applied for independently in different submission cycles.
- Funding must be for a specific project, not for core funding of an organization. All project expenses must directly impact the project.
- The maximum amount to apply for is 7 million pesos. Projects should be viable even if not fully funded by Liquen (potentially receiving 100% or 60%), requiring additional financing (co-financing or self-funding) if necessary.

How are projects evaluated?

It is essential that projects clearly contribute to Environmental or Community impact objectives. We seek projects that meet the following conditions:

- **Measurable and Sustainable Impact:** Clear success indicators and monitoring methods to assess short and long-term impacts. Project sustainability beyond funding ends, is crucial. This includes both environmental recovery and preservation, as well as reducing community vulnerability.
- **Efficiency and Feasibility:** Realistic and feasible projects are valued, demonstrating clear execution possibilities. They should use resources efficiently to ensure each investment generates significant impact.
- **Collaboration and Scalability:** promote collaboration within the community and/or with other organizations, with potential for scaling or replication to maximize reach and effectiveness.

* Co-Financing Incentive: We aim to foster lasting initiatives by incentivizing co-financing, thereby enhancing long-term sustainability of funded projects: **Liquen will provide additional funding equivalent to 10% of the budget, with a maximum limit of 100% of the originally requested amount. This 10% increase is available exclusively for projects securing participation from another external funder, covering at least 20% of the total requested and guaranteed before the voting phase.**

When to apply?

Our external form is open year-round. We collect project information in an internal database where Kurians can review and contact those interested in submitting a project.

If you want to share your project, [click here](#), and if a Kura member is interested in nominating it, they will contact you! (you can review the form questions on the next page).

Liquen projects application

1. Organization's name
2. What is the main activity of this organization? (Maximum 200 characters)
3. What is your email?
4. What is your phone number?
5. Do you have someone inside Kura Biotech who can represent your project?
6. Name of the project to be submitted
7. What is the proposed intervention or development that will be carried out with this project?
8. Where will your project be developed? (Región de los Lagos, Región Metropolitana, USA)
9. How many months will the project last?
10. What is the overall objective of the project? Describe what you aim to achieve
11. How will you achieve the proposed objective? Describe 3 specific objectives
12. How could Kurians get involved in your project? Describe their participation.
13. Which dimension of the Kura biotech Impact Model will you address?
14. Which of the following Lichen metrics will be addressed by your project?
15. Impact measurement:
 - a. Community
 - What specific barriers do the vulnerable people targeted by your project face? Describe how your project will help overcome these barriers and improve their situation.
 - How will you measure the impact on the quality of life of the vulnerable people participating in your project? Mention the metrics you will use to evaluate this impact.
 - Can you guarantee the sustainability of your project's results in the long term? Explain what strategies your project will implement.
 - b. Environment:
 - What specific environmental problems does your project address? Describe how your project will contribute.
 - How will you measure the environmental impact of your project? Mention the specific metrics you will use to evaluate this impact.
 - Can you guarantee the sustainability of your project's results in the long term? Explain what strategies your project will implement.
16. What budget do you need to achieve the proposed objectives?
17. What measures would you take if your project does not secure 100% of the requested budget from Liquen?
 - I am willing to fund the difference with my own resources.
 - I would explore co-funding options with other organizations or entities.
 - I would make budget adjustments to maximize the project's impact without significantly compromising its objectives.
 - The project is not be viable.
18. Send a PDF or PPT with the detailed proposal of this project to vivi@fundacionliquen.cl so the team can review and consider support. To gain extra points with the Kurians, we recommend sending a brief video! We have found it helps Kurians connect with the proposal ;)