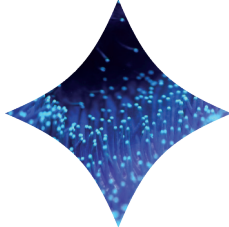


DeCodi-Fi™

2X ALL-IN-ONE MIX
QUICK START GUIDE



blikka[®]
KURA

Standard Recipe

Components	25 μ L reaction	Final concentration
dH ₂ O	To 25 μ L	-
DNA template	Variable*	1 ng-100 ng
Forward primer (10 μ M)	0.5 μ L	0.2 μ M
Reverse primer (10 μ M)	0.5 μ L	0.2 μ M
DeCodi-Fi™ 2X All-in-One Mix	12.5 μ L	1X

Primer Design:

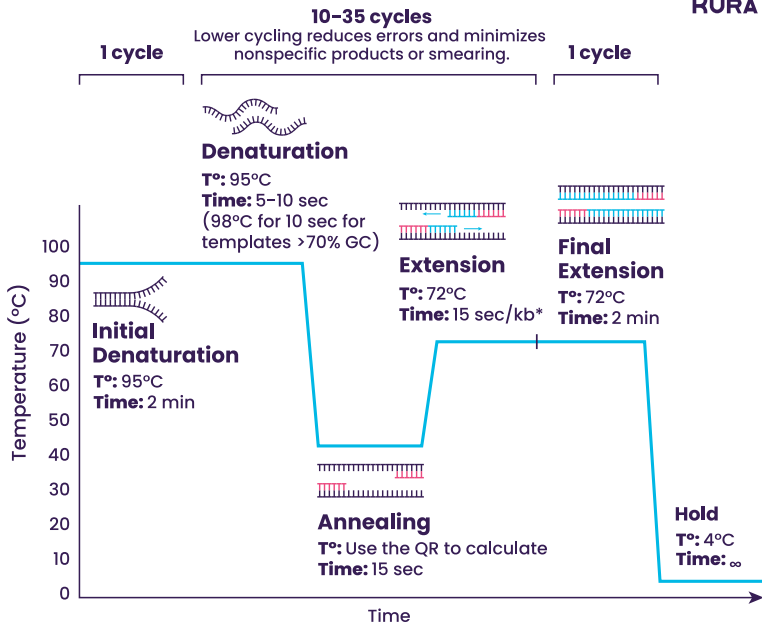
It is recommended to incorporate two phosphorothioate bonds at the 3'-ends of primer.

*Recommendations:

- ◆ 5- 50 ng gDNA
- ◆ \leq 1 ng for templates \leq 50Kb.
- ◆ Load $>10^4$ copies of template for obtaining amplification at 25 cycles, AVOID to use more than 100 ng per reaction
- ◆ **TIP:** 35 ng of human gDNA corresponds to 10^4 copies

Technical
Data Sheet





***Recommendations:**

- ◆ For plasmid amplification linearize it or lower the extension time if a higher molecular band is observed.

Tm calculator
Use the temperature obtained in the "salt adjusted" field.

